

## NOTRE DAME COMMUNITY

Notre Dame is located in Cape Girardeau, Missouri, population 36,000. Notre Dame is a regional Catholic high school with students coming from several communities in Southeast Missouri and Southern Illinois traveling up to 60 miles one way to school. Notre Dame has also served as host to several international students, including students from Japan, China, Indonesia, South Korea, Thailand, Mexico, Spain, Brazil, and Germany.

**FACULTY**—the faculty is comprised of over 40 clergy, religious and lay men and women who are all fully certified. The faculty has an average of 20 years of teaching experience, and more than 75% possess advanced degrees.

**STUDENT/TEACHER RATIO**—13:1

**CLASS SIZE**—15-30 students

**ENROLLMENT**—approximately 510 students in grades 9-12

## CHRISTIAN SERVICE

Students currently participating in the Christian service program have volunteered in excess of 13,000 hours of service to local communities, parishes and schools.

## EXTRA CURRICULAR ACTIVITIES

### INTER-SCHOLASTIC COMPETITION:

Baseball	Cross Country	Soccer
Track	Basketball	Dance
Softball	Volleyball	Cheerleading
Golf	Swimming	Scholar Bowl
Wrestling	Tennis	Music

### ADDITIONAL CLUBS AND ACTIVITIES:

Robotics Team	International Thespian Society
National Art Honor Society	Franciscan Service Club
Class and TEC Retreats	Harry Potter Club
Kairos and Emmaus Retreats	Backstage Blue
Blue Crew	Friends of the Library
Tri-M (Music Honor)	Encore
Math Club	National Honor Society
FCCLA	Gaming Club
Peer Helpers	FBLA
Science Club	Pro Life Club
SADD	United We Geek
Foreign Language Clubs	Student Council
Athletes Give Back	Seasons of Giving
Pep Band	Select Singers
First Friday Men's Club	Spanish/French Honor Society
Women In God's Service(WinGs)	Art Club

### EXTRA CURRICULAR HONORS

95% of students participate in extra curricular activities - 68% in sports activities. Notre Dame has been recognized in many areas of sports and activities with district titles, state championships, and state qualifiers.

## MISSION STATEMENT

Notre Dame Regional High School endeavors to foster and build upon the teaching mission of Jesus Christ. Our mission is to challenge and support students in their spiritual, academic, physical, and emotional development. Notre Dame encourages participation in activities that build character, with an emphasis on respect for self and others.

Notre Dame offers a disciplined environment which rewards excellence in scholarship, leadership, and service. Centering on the student, we pledge to promote superior standards of academic excellence in which gospel values and Catholic Church teachings are integrated in the lives and work of all members of the Notre Dame Regional High School community. Incorporating these ideals, our school motto is "Give us your child and we shall return you an apostle." It is the vision of the school that students will Enter to Learn and Leave to Serve.

## ACCREDITATION

Notre Dame is accredited by the *Missouri Nonpublic School Accrediting Association (MNSAA)*.

## RECOGNITION

Notre Dame has been recognized as a School of Excellence, a distinction achieved by *less than five percent* of the Catholic high schools in the U.S. This recognition denotes excellence in the integration of Catholic Identity in all aspects of our school. Catholic Education Honor Roll is a program sponsored by the Cardinal Newman Society in its mission to promote faithful Catholic education.

## STREAM-FOCUSED

STREAM schools, as identified by the NCEA, are schools that provide a challenging curriculum in the fields of Science, Technology, Math, and Arts through the lens of faith. This is a commitment to teaching both church doctrine and living a life representative of church values.

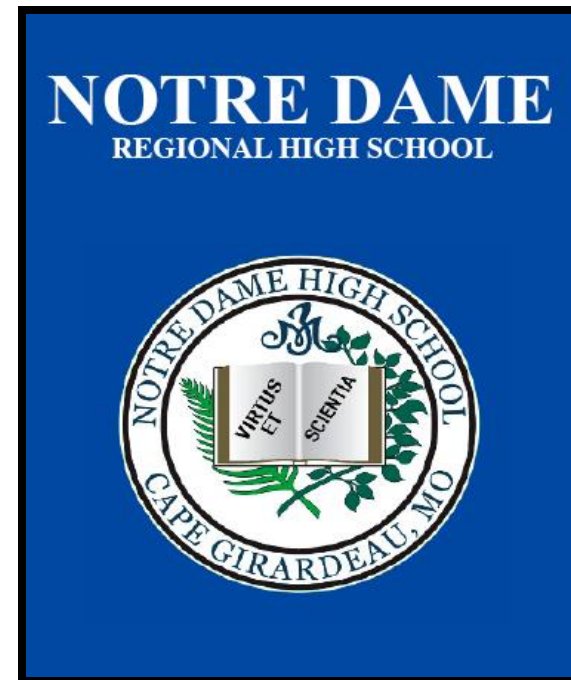
## ACCOMMODATIONS

Notre Dame is committed to educating all students. We make every effort to provide educational accommodations for those with special learning needs to ensure their success throughout high school.

## MEMBERSHIPS

- National Catholic Education Association
- National Association of Secondary School Principals
- Missouri Association of Secondary School Principals
- Missouri State High School Activities Association
- National Honor Society
- National Student Council Association

Each department holds memberships in district, state, and national associations.



265 Notre Dame Drive 573-335-6772  
Cape Girardeau, Missouri 63701 fax: 573-335-3458  
[www.notredamehighschool.org](http://www.notredamehighschool.org)

## 2018-2019 HIGH SCHOOL PROFILE CEE 260485



Brother David Anthony Migliorino, O.S.F., Principal  
Tim Garner, Assistant Principal, Dean of Academics  
Jeff Worley, Assistant Principal, Dean of Students,  
Technology and Facilities  
Paul Unterreiner, Dean of Student Activities  
Amanda Mueth, MA, NCC, Director of Guidance  
Ruth Ann Hester, MA, NCC, LPC – Counselor – Classes of 2019  
and 2021  
Justin Keusenkothen, Student Advisor—Classes of 2020 and 2022  
Sarah Strohmeyer, Director of Campus Ministry

## ACADEMIC INFORMATION

Notre Dame strives to promote the Academic and spiritual well-being of every student. Challenging courses in academics are teamed with a strong foundation of theology instruction to prepare students for active participation in the workplaces and communities of the future. Emphasis is placed on a four-year program in Theology, Math, Science, English, Social Studies and at least two years of a Foreign Language. Additional courses are available in practical arts (Business, Family and Consumer Science), fine arts (Choirs, Band, Drama, Visual Arts), and physical education.

## GRADUATION REQUIREMENTS

Credits in:

Theology (four years and retreats)	4
English	4
Mathematics	3
Science	3
Social Studies	3
Practical Art	.5
Economics	.5
Fine Art	1
Physical Education	1
Health	.5
Electives	9.5
<i>Total Credits</i>	30

Students are encouraged to pursue the *College Preparatory Studies Certificate* issued by Notre Dame, requiring additional credits, specific grade point averages, and above average ACT or SAT test scores.

## WEIGHTED COURSES

Advanced courses (Honors courses) are weighted an additional .35 grade point. For example, a student who receives an A in a weighted course receives 4.35 points in his GPA rather than the 4.00 points given in regular courses. If a student fails a weighted course, it is not weighted (F=0 grade point). The following courses are weighted:

Adv. English I&II	Honors Spanish II
Interpersonal Comm.	Spanish III, IV, V
Oral Communication	French I, II, III, IV
College Composition I&II	Chemistry
Music Theory	Advanced Chemistry I & II
Honors Geometry	Advanced Physics I & II
Honors Algebra II	Advanced Biology I & II
Pre-Calculus	Anatomy & Physiology I&II
Calculus	

This school is authorized under Federal Law to enroll nonimmigrant students.

## GRADING AND RANKING

Notre Dame is very challenging academically with the lowest passing grade at 70%. Most area high schools have a passing grade of 60%. All courses are included in a student's grade point average (GPA) except Physical Education courses (P.E., Dance, Weight Training), summer school, or correspondence courses. High school courses taken in eighth grade are noted on the transcript but neither grades nor credits are included in the high school GPA. Letter grades appear on transcripts and grade points are assigned as follows:

99%-100% A+	- 4.33	84%-85% C+	- 2.33
95%-98% A	- 4.00	80%-83% C	- 2.00
93%-94% A-	- 3.67	78%-79% C-	- 1.67
91%-92% B+	- 3.33	76%-77% D+	- 1.33
88%-90% B	- 3.00	72%-75% D	- 1.00
86%-87% B-	- 2.67	70%-71% D-	- 0.67
		69% & below	- 0.00

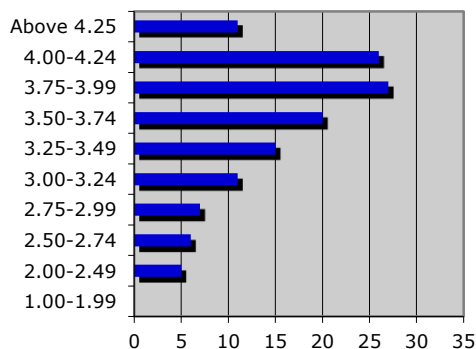
## CLASS RANK and ACADEMIC HONORS

The practice of reporting class rank has been discontinued at Notre Dame Regional High School. Only the ranks of valedictorian and salutatorian will continue to be recognized based on students' accumulative grade point averages at the end of the third quarter of the senior year. Instead of reporting class rank or percentage in class, a student's GPA will be reported on the transcript and a GPA distribution chart is made available on the Notre Dame school profile. Academics will further be recognized by the following academic honors system:

4.00 or better	Summa Cum Laude
3.75 – 3.99	Magna Cum Laude
3.50 – 3.74	Cum Laude

We strongly encourage full attention to admissions and scholarship considerations based on rigor of course work, grades earned, and college admissions testing rather than any emphasis placed on class rank or percentile.

## CLASS OF 2018 - GRADE DISTRIBUTION



## COLLEGE ADMISSIONS TESTING CEEB 260485

### ACT SCORE DISTRIBUTION - CLASS OF 2018

36—0	30--5	24—9
35—0	29—2	23—10
34—2	28—4	22—7
33—3	27—5	21—15
32—4	26—11	20—16
31—6	25—13	<20—13

### SAT

Because so few students take the SAT (3-6 per year), we do not report averages or other statistics for this test. Individual scores are included on the transcript.

### COLLEGE CREDIT OPPORTUNITIES

Qualified students may earn college credit through dual credit or early college credit programs. A total of 61 college credit hours are available through Southeast Missouri State University or St. Louis University. In addition, seniors and juniors may earn college credit through Mineral Area College as part of a Tech Prep curriculum at the Cape Career and Technology Center. Students are also encouraged to register for the AP exams given at Notre Dame each year.

### POST SECONDARY PLANNING

Generally, 97% of our graduates attend college. Over the last five years, approximately 92% attended 4-year institutions and 5% attended 2-year schools.

### IN THE CLASS OF 2018:

92%	4-yr college	2% military
3%	2-yr college	3% work

### HIGHER EDUCATION PREPARATION CLASS OF 2018

- 98% of our seniors took the ACT with an average score of 24 and the top 10% of students averaged a 30
- 78% of our tested seniors scored at or above the national ACT average of 21
- 16% of the tested seniors scored in the top 5% in the state on their ACT scores
- 82% of the seniors earned in excess of \$8.75 million in scholarships

### COLLEGE ACCEPTANCES

Boston College	United States Naval Academy
University of Georgia	University of Mississippi
Indiana University--Bloomington	University of Notre Dame
Michigan State University	Texas Christian University
Ohio State University	University of Miami
Rutgers University	University of Missouri--Columbia
Texas A & M University	University of Connecticut
St. Louis University	University of South Carolina
Univ. Of MO—Kansas City	Washington University STL